

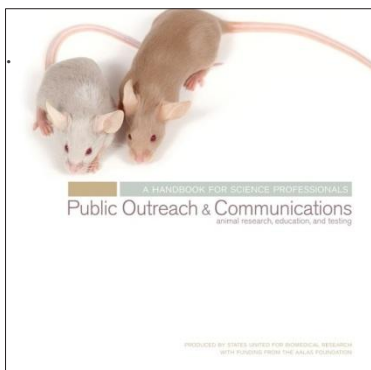
States United for Biomedical Research



Science

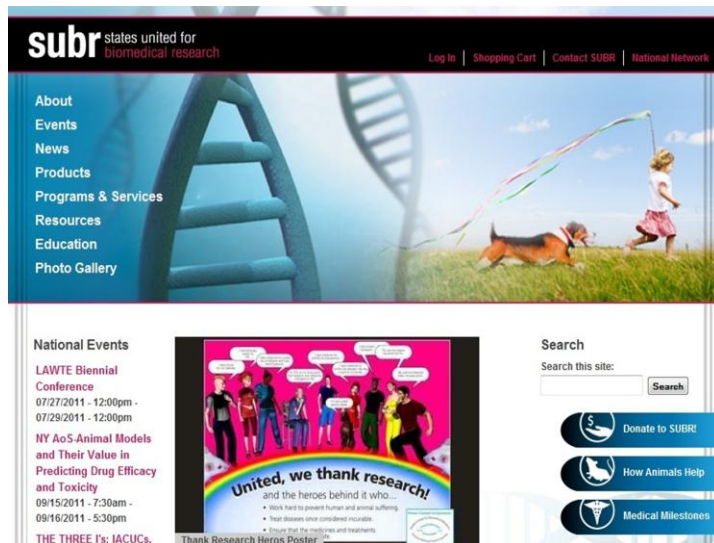
Understanding

Hope



SUBR publishes and distributes the **CD version of “A Handbook for Science Professionals: Public Outreach & Communications.”** which was funded by the AALAS Foundation.

This comprehensive and strategic guide discusses humane, responsible animal research and is for use by all stakeholders in the animal research community. Free copies are available. Contact us at subr@statesforbiomed.org for further information.



www.statesforbiomed.org



SUBR Special Awards for Excellence Biomedical Research-Intel ISEF 2011

for the top biomedical projects that best demonstrate the goal of advancing human and/or veterinary medicine. Science Service, in partnership with the Intel Foundation, announces awards at the Intel ISEF Special Awards Ceremony each May. Student winners are ninth through twelfth graders who earned the right to compete by winning top prize at a local, regional, state or national science fair.

SUBR participates in the Intel ISEF program by offering **Special Awards for Excellence in Biomedical Research**

The SUBR Website Project currently features statesforbiomed.org, njabr.org, tsbr.org and osera.org, with links to all SUBR member, affiliate and related organizations. States forbiomed.org is the national go-to site for everyone involved in public outreach and education to promote public understanding of and support for biomedical research. From the SUBR website, one click on the **National Network map** will take the user to his or her state or regional organization. This website is a treasure trove of information for members of the research community, teachers, students and the general public.

Congratulations!

Alice Ra'anán – SUBR Distinguished Service Award (2010)
Kevin Phelps – SUBR Public Outreach Award (2010)

Nominations for 2011 Awards are currently being accepted. For more information, go to: www.statesforbiomed.org

Join us on Facebook and Twitter!

States United for Biomedical Research

SUBR is a 501(c)(3) nonprofit consortium of local, state, regional, and national associations. SUBR is committed to building collaborative networks of organizations, institutions, businesses and individuals to promote public understanding of and support for biomedical research.

SUBR members represent over 500 of their own membership institutions including hospitals, healthcare systems, colleges and universities, voluntary health organizations, government agencies, research and health related organizations, biotechnology and pharmaceutical companies, professional associations and other members of the research community.

SUBR promotes:

- Excellence in science education
- K-12 student interest in science careers
- Public understanding about the care and use of animals in biomedical research
- Public outreach by the research community

Members

Members are statewide or regional organizations that provide programs and resources about the benefits of biomedical research and the important role that laboratory animals play in the scientific process.

- Alabama Association for Biomedical Research
- California Biomedical Research Association (CA, NV)
www.ca-biomed.org
- CURE, Connecticut's Bioscience Cluster
www.curenet.org
- Massachusetts Society for Medical Research (MA, ME, NH, RI, VT), www.msmr.org
- Michigan Society for Medical Research
www.mismr.org
- Mid-Continent Association for Agriculture, Biomedical Research & Education (MO, KS, NE, IA)
www.maabre.net
- New Jersey Association for Biomedical Research
www.njabr.org
- North Carolina Association for Biomedical Research
www.ncabr.org
- Northwest Association for Biomedical Research (WA, OR, MT, ID), www.nwabr.org

- Ohio Scientific Education & Research Association
www.osera.org
- Pennsylvania Society for Biomedical Research (PA, DE), www.psbr.org
- Southwest Association for Education in Biomedical Research (AZ, NM), www.swaibr.org
- Texas Society for Biomedical Research, www.tsbr.org
- Wisconsin Association for Biomedical Research & Education, www.wabre.org

Affiliate Members

Affiliate members are scientific associations that support the work of SUBR.

- American Physiological Society, www.the-aps.org
- Americans for Medical Progress
www.amprogress.org
- Chicago Branch AALAS, www.cbaalas.org
- Indiana Branch AALAS, <http://in.d5aalas.org>
- Laboratory Animal Welfare Training Exchange
www.lawte.org
- Metropolitan New York Branch AALAS
www.mnybaalas.org
- Society for Neuroscience, www.sfn.org
- Society of Toxicology, www.toxicology.com
- University of Minnesota, www.ess.umn.edu and
www.research.umn.edu/regaffairs/
- Upstate New York Branch AALAS
www.unyb-aalas.org
- Yerkes National Primate Research Center
www.emory.edu/WHSC/YERKES

Sponsors & Donors

- The Charles River Laboratories Foundation
- GlaxoSmithKline, Inc.
- Pfizer, Inc.
- Society for Neuroscience
- American Physiological Society